



# Monache Band Parents Association

August 2009

WWW.MONACHEBAND.ORG

Dear Parents and Students,

It's just about time to kick off another year for the Monache Marauder Band. As always the music is going to be exciting, entertaining and performed at the highest level. We have several new people coming on board to assist us this year. I would like to welcome Stephani Berra ('93 alumni) and Hillary Dennis ('05 alumni) who will be the advisors for the Flag Team this year. Laura Rodriguez ('05 alumni) has already been meeting with the Majorettes and is bringing new and exciting ideas to the team. With this outstanding team of people working with the Band, I expect us to have a very successful fall marching season.

For the parents who are new to us this year, here are some of the things you can expect your child to be doing when school begins. Band Camp week (August 3-7) is critical to our fall success and students of all grade levels are expected to attend. We usually learn the music for the opener of the field show. In addition we will be learning the drill to the opener which generally amounts to about 20 pages of drill. This year we are also going to begin working on some new stands music for our fall home games. Also your child will be fitted for his or her uniforms during Band Camp week. Varsity Band is scheduled for fourth period and we rehearse daily. Our main focus during the school day is on music. I generally save drill practice for night rehearsals but will spend time during fourth teaching drill when necessary. A typical fourth period rehearsal is as follows: 10 minutes of warm-up, 10 minutes reviewing previous material, 20 minutes on the focus for that day, 10 minutes of review and cool down.

I would like to send a special thank you to Joe and Melanie Baeza who organized our fireworks booth this summer. For those of you who participated you have already been introduced to MBPA. The Monache Band Parents Association is a great organization to be involved with when your students are in high school. Our monthly meetings are the main source of information about the Band. You'll be seeing your student at their finest, as well as meet some great families and build some life-long friendships. Our meetings are always the first Thursday of the month. We have a few openings that still need to be filled. If you are interested please call our President, Frank Chandler (310-4209). Frank is going to be an excellent leader this year and he has prepared an outstanding year for our parent organization. Don't miss out on the opportunity to be involved!

Thank you for being a part of the Marauder Band.

Musically,

*Justin Adams*

Monache Band Parents Association  
Orientation and General Meeting  
Thursday, August 6, 2009  
6:30 p.m.  
Monache Campus Center



This is your opportunity to learn everything you ever wanted to know about the Monache Band Parents, about expectations for both parents and students as a member of the Marauder Band, and to find out just where you can make your contribution to this outstanding organization. **This meeting is for both STUDENTS and PARENTS of all grade levels and is a MANDATORY MEETING.** All students should plan to be present along with a parent or guardian.

# Welcome!

## From the President

My name is Frank Chandler and I will be presiding as President of the Monache Band Parents Association for the 2009-2010 school year. As we begin a new year I would like to say a few words on behalf of the MBPA Executive Board and the Board of Directors. First of all, welcome! We look forward to your involvement with this organization. As I'm sure you've seen, the Monache Band is an outstanding organization, having won awards all over the United States. Now that you are going to be a member of this organization you will be able to participate and experience the thrill and honor of being part of this Band. Our Band participates in many field show and parade competitions. Some are held in stadiums that seat thousands of people and others in high school stadiums. Regardless of the size, all the competitions are fun and rewarding. Our Drum Line and Auxiliary units compete in the winter season and we conclude the school year with our annual Spring Concert in May. As you can see, we are a busy group of parents, just attempting to keep up with the kids and events! Without the volunteer efforts of parents like you we would be unable to support the Band and fund these events.

**FUND EVENTS, you ask?** Yes, that's right! All these things cost money.... competition fees, transportation fees, food, water, uniform repair and even pulling the equipment trailer. That's why the MBPA (Monache Band Parents Association) was founded. To provide support to the Monache Band physically, morally and financially. In order to provide the support the Band requires we need the assistance and volunteer efforts of all the parents, grandparents and guardians of our Band members. The best way for you to assist is by joining a Committee that has been created to provide support such as... **Fund-raising**, **Uniforms** (which include alterations, repairs and Keepers of the Plumes) , **Catering Team** ( who feeds the Band when we're at competitions), **Teriyaki Team** (who prepare and sell Teriyaki sticks at the home football games), **Blue Crew** (who help set up the pit equipment at halftime performances) and the most important one ,in my opinion, the **Equipment Trailer Hauling Team**. This requires a truck capable of pulling a goose neck trailer (fortunately we have the goose neck attachment).

In conclusion, you can see why we need everyone's help to provide support to the Band. I'd like to invite you to our first meeting on August 6 at 6:30 pm in the Monache High Campus Center, and encourage everyone to get involved and be part of this award winning organization. I can guarantee you will not regret it but rather be delighted and thrilled to say YOU were part of the Monache Band Parents Association, and the MONACHE BAND and COLOR GUARD !

See you at the meeting,

*Frank Chandler*  
MBPA President

### Monache Band Parents Association Board of Directors and Committee Chairs 2009-2010

#### Executive Board

**President**--Frank Chandler

**Vice President**--Jamie McGlasson

**Treasurer**--Melanie Lewis

**Secretary**--Vacant

#### Directors

Joe Baeza

Jim Ellis

Melanie Baeza

Kik Ellis

Michele Chandler

Stephanie Imbach

Holly Clem

Laura Kasimoff

Sandy Cory

Jaqueline Meredith

Stacey Doyel

Don Stover

Tim Doyel

Alice Williams

Dora Duran

Steve Williams

#### Committee Chairs

**Teriyaki**--Steve & Amy Browne

**Lunch Bunch**--Frank & Michele Chandler

**Pre-Festival Potluck**--Stacey Doyel

**Blue Crew**--VOLUNTEER NEEDED

**Equipment Trailer**--VOLUNTEER NEEDED

**Plumer**--VOLUNTEER NEEDED

**Uniforms**--Analia McGlasson/ Laura Kasimoff

**Publicity**--VOLUNTEER NEEDED

**Half-time Refreshments**--Jim & Kik Ellis

**Head Chaperone**--Jamie McGlasson

**Trip Coordinator**--Stephanie Imbach

**Student Accounts**--Alice Williams

**Newsletter**--Stephanie Imbach

**Fireworks Booth**--Joe and Melanie Baeza

## A Word About “Fair Share”



As the new school year begins, the Monache Band Parents Association will once again be implementing our “Fair Share” program. Fair Share was introduced four years ago as a way all Band, Flag Team and Majorette families can contribute to the operation of the Band. The Monache Band Parents have an annual operating budget of approximately \$35,000.00. These funds are used to provide items and services that exceed the annual Band budget provided by the school district. Items such as transportation costs, Fees and membership dues for halftime competition events, material for constructing halftime show props, special music arrangements, enhanced choreography, repair of instruments owned by the Band, MBPA-owned equipment maintenance and repair, office supplies, replacement of equipment/instruments as needed and end of the year awards.

The Fair Share donation is \$200.00 per student each academic year and can be satisfied either through fund-raising or through a direct contribution. All contributions made by a direct donation are entirely tax deductible and you will be provided with a receipt for your records. Donations can be made either in a lump sum or broken up over a 3 or 6 month payment plan. (Please see further information on the payment options in this newsletter.)

This is just one way to support the Band. When you make this donation one hundred percent of your money will be used to support our children and the activities they, the Band, participate in. Fair Share is something encouraged as a parent member of the Monache Band Parents, but cannot be required for your student to participate in the school sponsored activity. It is a fair and reasonable way to support the Band. We will be discussing Fair Share at our first MBPA meeting of the year on August 6th. Should you have any questions we welcome you to ask them at that time, or see any MBPA Executive Board member. We will be happy to discuss any questions you may have about Fair Share.

## MEETING YOUR FAIR SHARE



There are several ways to meet your Fair Share for the upcoming year. Should you choose to participate in our up-coming fundraising opportunities, proceeds from your sales will be credited towards your student's Fair Share donation. If you prefer to make a tax deductible donation there are three payment plans available:

**Single Payment Plan:** One time donation of \$200.00 received by November 1, 2009 (\$10.00 discount).

**Three Month Payment Plan:** 3 payments of \$70.00 each. Received October 1, November 1, & December 1

**Six Month Payment Plan:** 6 payments of \$35.00 each. Received October 1, November 1, December 1, January 1, February 1, & March 1.

Regardless of which plan you choose, once the Fair Share is met for the year proceeds from all fund-raisers you participate in for the remainder of the academic year will be credited to your student's individual Student Account. Fair Share is a yearly donation to the Band and begins July 1 of each calendar year. Fair Share is to be paid in full by March 1, 2010.

For your convenience, below please find a payment coupon to be returned with your donation. Payments may be made at monthly MBPA meetings or by mail (MBPA, PO Box 255, Porterville, CA 93258). Please do not send Fair Share payments to school with your child. Mr. Adams is not able to accept payments during the school day. A receipt will be provided for your records.

### MONACHE BAND PARENTS FAIR SHARE DONATION

STUDENT NAME: \_\_\_\_\_

PARENT NAME: \_\_\_\_\_

PARENT PHONE #: \_\_\_\_\_

PAYMENT PLAN (CIRCLE ONE): SINGLE, 3 MONTH, 6 MONTH

PAYMENT AMOUNT: \_\_\_\_\_

CHECK # \_\_\_\_\_ CASH \_\_\_\_\_

MBPA, PO BOX 255, PORTERVILLE, CA 93258

# Uniform Fittings To Take Place During Band Camp

It's that time of year again! Time for our kids to get the perfect fit for their Marauder Band uniform. This year each student will be given a packet of information on the first day of Band Camp. Including in this packet will be their Uniform Contract, their Uniform Package order sheet, the Medical Release and the guidelines for wearing and maintaining their uniform.

Each student **MUST** return the completed Contract and Order Form, the Medical Release and also bring payment for their package with them on the day of their fitting.

Dates for fitting will be as follows:

Seniors	Tuesday, August 4
Juniors	Wednesday, August 5
Sophomores	Thursday, August 6
Freshmen	Friday, August 7



On fitting day, your child should bring completed paperwork and fees (checks made out to MBPA). He or she should wear nylon-type gym shorts or bike shorts and T-shirt for fitting. If there are no alterations to be made, the students will be able to take their uniforms home on fitting day. If there are alterations, they will be made by our seamstresses and be available for pick up in the Band room when they are completed. Under no circumstances will a child be allowed to take home a uniform if the fees and paperwork are not complete. If you misplace your copy, just go to the website at [www.monacheband.org](http://www.monacheband.org) where you can print a replacement form. Students with outstanding scrip money will also not be fitted until they are cleared with Mrs. Baeza.

If our Uniform team finds themselves ahead of schedule they will **MOVE ON TO THE NEXT CLASS**, so please bring your paperwork starting on Tuesday for the earliest opportunity to be fit.

The Uniform Packages available are as follows. This year we are including lunch fees with the Uniform package so all meals will be paid for in advance.

<p><b>Package #1 \$40 _____</b></p> <p>Monache Band T-Shirt Year-End Cleaning *(4) Meals</p>	<p><b>Package #2 \$50 _____</b></p> <p>Monache Band T-Shirt Year-End Cleaning 2 pairs of black socks 2 pairs of gloves *(4) Meals</p>	<p><b>Package #3 \$70 _____</b></p> <p>Monache Band T-Shirt Year-End Cleaning 2 pairs of black socks 2 pairs of gloves Skull Cap *(4) Meals</p>
--	---	---

Additional Items	
Socks	\$3/Pair _____
Gloves	\$2/Pair _____
Skull Cap	\$20 _____

Students with hair that shows below the band hat should be prepared to purchase a skull cap. Make your checks for Uniform Packages payable to MBPA. Exact change is appreciated. Please note that Uniform Packages only include year-end cleaning. You will be responsible for 3 dry cleanings during the year at the discretion of the band director. Purchase band shoes at White's Music.

## HELP WANTED!

We are in need of several individuals to help with uniform fitting during the week of Band Camp. We need help with fitting and also we need those of you who are good with a needle to come forward to assist with alterations. This is a fantastic opportunity for parents of new Band students to get involved with the MBPA. You will be afforded the unique privilege of measuring each and every student -- thus meeting the young lads and lasses that will be spending lots of time with your student. If you are available during the mornings during Band Camp week please call Analia McGlasson 361-3090 to volunteer.



**Monache Marauder Band  
Band Camp  
August 3-7, 2009  
9:00 a.m. - 1:00 p.m.**

**All Band and Auxiliary are expected to attend.**

What to bring: Your instrument  
Dress Comfortably for Warm Weather  
Athletic Shoes for Marching  
A Hat  
Sunscreen  
Water

Come prepared with a good attitude and ready to work. We will be charting the opener and more of our 2009 field show, "In the Shadow of Dragons". Uniforms will also be issued during this week. Information to follow.

**Percussion Practice Dates**

Practice for all percussion musicians will be held on the following dates:

Tuesday, July 21, 2009 4-7 p.m.  
Thursday, July 23, 2009 4-7 p.m.  
Tuesday, July 28, 2009 4-7 p.m.  
Thursday, July 30, 2009 4-7 p.m.



## **IT'S TERIYAKI TIME!**

**Here's an opportunity for interested parents to help with one of the longest standing fundraisers in the history of The Monache Band! We need willing people to help on home game weeks to prepare the Teriyaki Sticks on the Thursday night before the game. It's easy and it's fun. The time commitment is about 1 1/2 hours each time. We meet in the teacher's lounge at the back of the Campus Center at 6 p.m. The more participation we have, the faster we're done!**

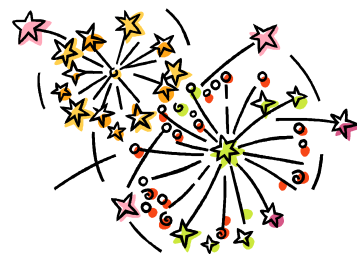
**We are also needing help on game nights selling teriyaki at our sales table and also up in the stands. And a few more folks willing to man the BBQ would be great!**

**If you can give us a hand, please call Steve Brown at 788-7871.**



## A NOTE OF THANKS!

As we wrap up our first year serving as Chairpersons for the Marauder Band Fireworks Booth, we would like to express our gratitude to those of you who gave so generously of your time to help make our booth so successful. Without our volunteers it would be impossible for the Band to take advantage of this wonderful fund-raising opportunity.



A special thanks to Frank and Michelle Chandler who spent hours with us at the booth location, and to our wonderful students who helped us keep the booth stocked and also hosted our concession table. Also thank you to Stephanie Imbach for filling in for us during our vacation week.

There are still several students who have outstanding scrip money. It is imperative that we receive this as soon as possible. **Uniforms will not be issued to those students with outstanding scrip money.** Please contact us at the number below to make arrangements to get your money to us.

Joe and Melanie Baeza - 361-6819



## CHAPERONES WANTED!!!!

MBPA is currently recruiting for chaperones for the upcoming 2009-2010 school year.

Job Description/Characteristics/Experience: Team players needed for exciting and sometimes chaotic work with young, talented, motivated musicians and auxiliary team. Individuals possessing a sense of humor, positive attitude, enthusiasm, flexibility and willingness to work variable shifts should apply. Some overnight and day travel required. Unfortunately, travel expenses are not reimbursed. No previous experience is required but on the job training is offered. Benefits: this job offers limitless opportunities for personal growth, friendships and incredible memories with your child and the Monache Marauder Marching Band.

In all honesty, what better way to spend time with these terrific young adults, to make new friends and help this great organization all at the same time!

All volunteers and/or chaperones associated with the Band must complete/ return a Volunteer Form and submit to fingerprinting (at your cost).

Some of you may have chaperoned in years past or perhaps this is something new you may be interested in pursuing. Either way, please contact me at 719-9841 (cell) or email; [jmcglasson@burton.k12.ca.us](mailto:jmcglasson@burton.k12.ca.us) if interested.

*Jaime McGlasson*

Head Chaperone



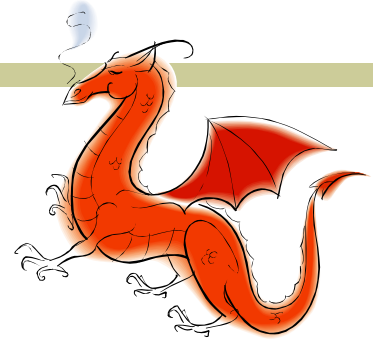
# DO YOU KNOW???



There's a place you can go to get all the latest about what's going on with the Band? Including information about up-coming events, fund-raisers and schedule changes... plus lots more! Make [www.monacheband.org](http://www.monacheband.org) your home page and you'll always be "in the know"!

---

## Band Half-Time Show T-Shirts



Orders are currently being taken for the 2009 Marauder Band Field Show T-shirt, "In the Shadow of Dragons." Band member's shirts are part of their uniform package and are prepaid. Additional shirts for parents, grandparents, friends, etc., can be ordered when paying for the Uniform Package, or please call Stephanie Imbach at 260-4525. The order will be turned in on Friday, September 4th, so the shirts can be ready for our first field show performance on September 18th.

Don't miss your chance to show your Marauder pride in the stands this year! Order yours today!

---

## Keep Your Eyes and Ears Open!!!

Watch for information coming soon on two fund-raisers being offered this fall. Early in September we will be hosting a spaghetti dinner in the Campus Center. And as we approach the holidays we will be offering Marie Callender's pies for Thanksgiving. Look for information at the Marauder Band website at [www.monacheband.org](http://www.monacheband.org), in your September newsletter and coming home with your student.

# 2009-2010 MHS Marching Band Calendar

Day	Date	Event	Venue	Call Time	Event Time	Special Notes
Mon-Fri	August 3-7	Band Camp	MHS		9:00am-1:00pm	
Tuesday	August 11, 2009	Night Rehearsal	MHS		6:00-9:00pm	
Thursday	August 13, 2009	Night Rehearsal	MHS		6:00-9:00pm	
Thursday	August 20, 2009	Night Rehearsal	MHS		7:00-9:00pm	WW 6:00
Tuesday	August 25, 2009	Night Rehearsal	MHS		7:00-9:00pm	Brass 6:00
Thursday	August 27, 2009	Night Rehearsal	MHS		7:00-9:00pm	Pit 6:00
Tuesday	September 1, 2009	Night Rehearsal	MHS		7:00-9:00pm	Battery 6:00
Thursday	September 3, 2009	Night Rehearsal	MHS		7:00-9:00pm	WW 6:00
Tuesday	September 8, 2009	Night Rehearsal	MHS		7:00-9:00pm	Brass 6:00
Thursday	September 10, 2009	Night Rehearsal	MHS		7:00-9:00pm	Pit 6:00
Tuesday	September 15, 2009	Night Rehearsal	MHS		7:00-9:00pm	Battery 6:00
Thursday	September 17, 2009	Night Rehearsal	MHS		7:00-9:00pm	WW 6:00
Friday	September 18, 2009	Home Football Game	PC		6:00-10:00pm	
Tuesday	September 22, 2009	Night Rehearsal	MHS		7:00-9:00pm	Brass 6:00
Thursday	September 24, 2009	Night Rehearsal	MHS		7:00-9:00pm	Pit 6:00
Friday	September 25, 2009	Home Football Game	PC		6:00-10:00pm	
Tuesday	September 29, 2009	Night Rehearsal	MHS		7:00-9:00pm	Battery 6:00
Thursday	October 1, 2009	Night Rehearsal	MHS		7:00-9:00pm	
Friday	October 2, 2009	Home Football Game	Rankin Stadium		6:00-10:00pm	
Saturday	October 3, 2009	Saturday Rehearsal	MHS		9:00am-12:00pm	
Tuesday	October 6, 2009	Night Rehearsal	MHS		7:00-9:00pm	
Thursday	October 8, 2009	Night Rehearsal	MHS		7:00-9:00pm	
Tuesday	October 13, 2009	Night Rehearsal	MHS		7:00-9:00pm	
Thursday	October 15, 2009	Night Rehearsal	MHS		7:00-9:00pm	
Friday	October 16, 2009	Home Football Game	Rankin Stadium		6:00-10:00pm	
Tuesday	October 20, 2009	Night Rehearsal	MHS		7:00-9:00pm	
Thursday	October 22, 2009	Night Rehearsal	MHS		7:00-9:00pm	
Saturday	October 24, 2009	Golden State Tournament of Bands	Buchanan, Clovis		2:00-10:00pm	
Tuesday	October 27, 2009	Night Rehearsal	MHS		7:00-9:00pm	
Thursday	October 29, 2009	Night Rehearsal	MHS		7:00-9:00pm	
Friday	October 30, 2009	Home Football Game	Rankin Stadium		6:00-10:00pm	
Saturday	October 31, 2009	Selma Marching Band Festival	Selma, CA		7:00am-10:00pm	
Thursday	November 5, 2009	Night Rehearsal	MHS		7:00-9:00pm	
Saturday	November 7, 2009	Sierra Cup Classic	Fresno State		2:00-10:00pm	
Wednesday	November 11, 2009	Veteran's Day/ Band A Rama	PC		8:00am-5:00pm	
Friday	November 13, 2009	Home Game	Rankin Stadium		6:00-10:00pm	
Thursday	December 3, 2009	Porterville Christmas Parade	Porterville		6:00-9:00	
Friday	January 29, 2010	Winter Percussion	Clovis East		TBA	
Friday	February 12, 2010	Winter Percussion	Buchanan		TBA	
Thursday	February 25, 2010	Pre Festival Potluck	MHS		5:30-8:00pm	
Friday	February 26, 2010	Winter Percussion	Clovis North		TBA	
Friday	March 5, 2010	CMEA Festival	Mem. Auditorium		TBA	
Friday	March 12, 2010	Winter Percussion	Clovis East		TBA	
Saturday	March 27, 2010	Winter Percussion Finals	Clovis North		TBA	
	April 2010	WBA Concert Band Festival/ SCPA Championships	TBA		TBA	
Saturday	May 1, 2010	Cinco De Mayo Parade	Porterville		9:00-12:00	
Saturday	May 1, 2010	Spring Concert Dress Rehearsal	Mem. Auditorium		12:00-2:00pm	
Saturday	May 1, 2010	41 <sup>st</sup> Annual Spring Concert	Mem. Auditorium		6:00-10:00pm	
Friday	June 4, 2010	Graduation	PC		7:00-10:00pm	

# Monache Band Parents Association

MBPA  
PO Box 255  
Porterville, CA 93258  
**Return Service Requested**

Non -Profit Organization  
US Postage Paid  
Permit No. 07  
Porterville, CA



## Save These Dates!

**MBPA Meetings are held the first Thursday of every month (except January), at 6:30 pm in the Campus Center. Mark your calendars now so you can be in on all of the action!**

**August 6, 2009 \***

**September 3, 2009**

**October 1, 2009**

**November 5, 2009**

**December 3, 2009**

**February 4, 2010**

**March 4, 2010**

**April 1, 2010**

**May 6, 2010**

*Get the latest info @  
[www.monacheband.org!](http://www.monacheband.org)*

**\* Mandatory Orientation Meeting Parents & Students**